

**ADDENDUM No. 3 to
BIDDING DOCUMENTS**

For

**IFB No. B21004
ASPHALT PAVING SERVICES**



AMSTERDAM HOUSING AUTHORITY

May 20, 2021

ADDENDUM No. 3
IFB No. B21004 ASPHALT PAVING SERVICES
AMSTERDAM HOUSING AUTHORITY

I. REVISION TO IFB DOCUMENT, Section 2.2, Specific Work Requirements.

A. Revision of section 2.2.1.8

1. 27 Wall Street: Employee Parking lot total square area = 4,970.00 sqft
60 Division Street: East Court total square area = 4,356.55 sqft
~~60 Division Street: West Court total square area = 4,405.75 sqft~~

~~**Total Project square footage = 13,732.25 sqft**~~

~~**Amsterdam Housing Authority has removed the milling and overlay of asphalt paving from the West Play Area from the bid.**~~

Revised to:

- 27 Wall Street: Employee Parking lot total square area = 4,970.00 sqft
60 Division Street: East Court total square area = 4,356.55 sqft

Total Project square footage = 9,326.55 sqft

Minor patch work of potholes has been included within the West Court play Area.

II. ADDITION TO IFB DOCUMENT, SHEET: A-01, Site Plan of 27 Wall Street

A. 27 Wall Street Site plan

1. Please refer to Sheet A-01

III. REVISION TO IFB DOCUMENT, SHEET: A-00, Site Plan of 60 Division Street

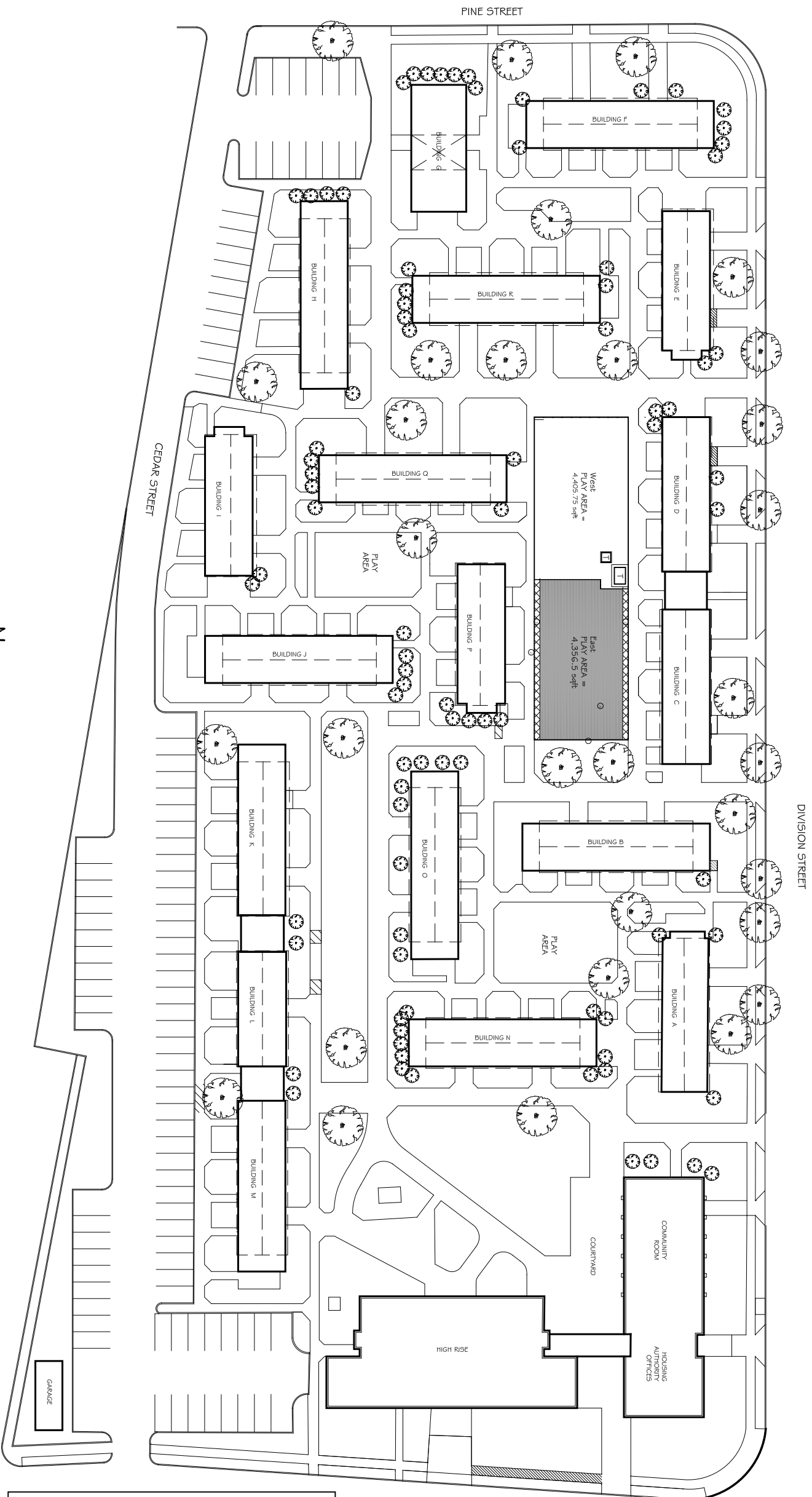
A. 60 Division Street Revision

1. **Please refer to Sheet: A-00 Rev. 1.** Removal of Millwork and over lay to West Court play area. Instead, include minor patch work of pothole on Asphalt pavement.

IFB No. B21004 ASPHALT PAVING SERVICES

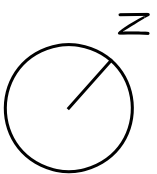
AMSTERDAM HOUSING AUTHORITY

60 DIVISION STREET, AMSTERDAM, NEW YORK



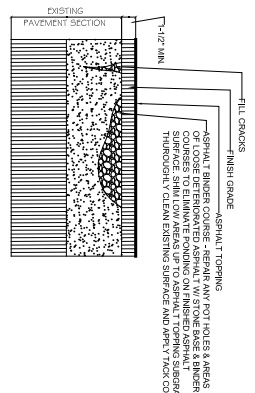
1
A-00
AMSTERDAM HOUSING AUTHORITY SITE PLAN

SCALE: 1/4" = 1'

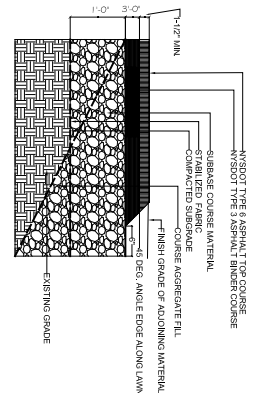


WALL STREET

1
A-01
ASPHALT OVERLAY
NOT TO SCALE



1
A-02
ASPHALT PAVEMENT PARKING
NOT TO SCALE



KEY NOTES for East Play Area

SAW CUT ASPHALT IN NEAT STRAIGHT LINES. MILL & REMOVE EXISTING ASPHALT PAVEMENT, INCLUDING SUB-BASE MATERIAL, AND DISPOSE OF OFF-SITE.

PREPARE ASPHALT FOR OVERLAY. INSTALL ASPHALT PAVEMENT ON

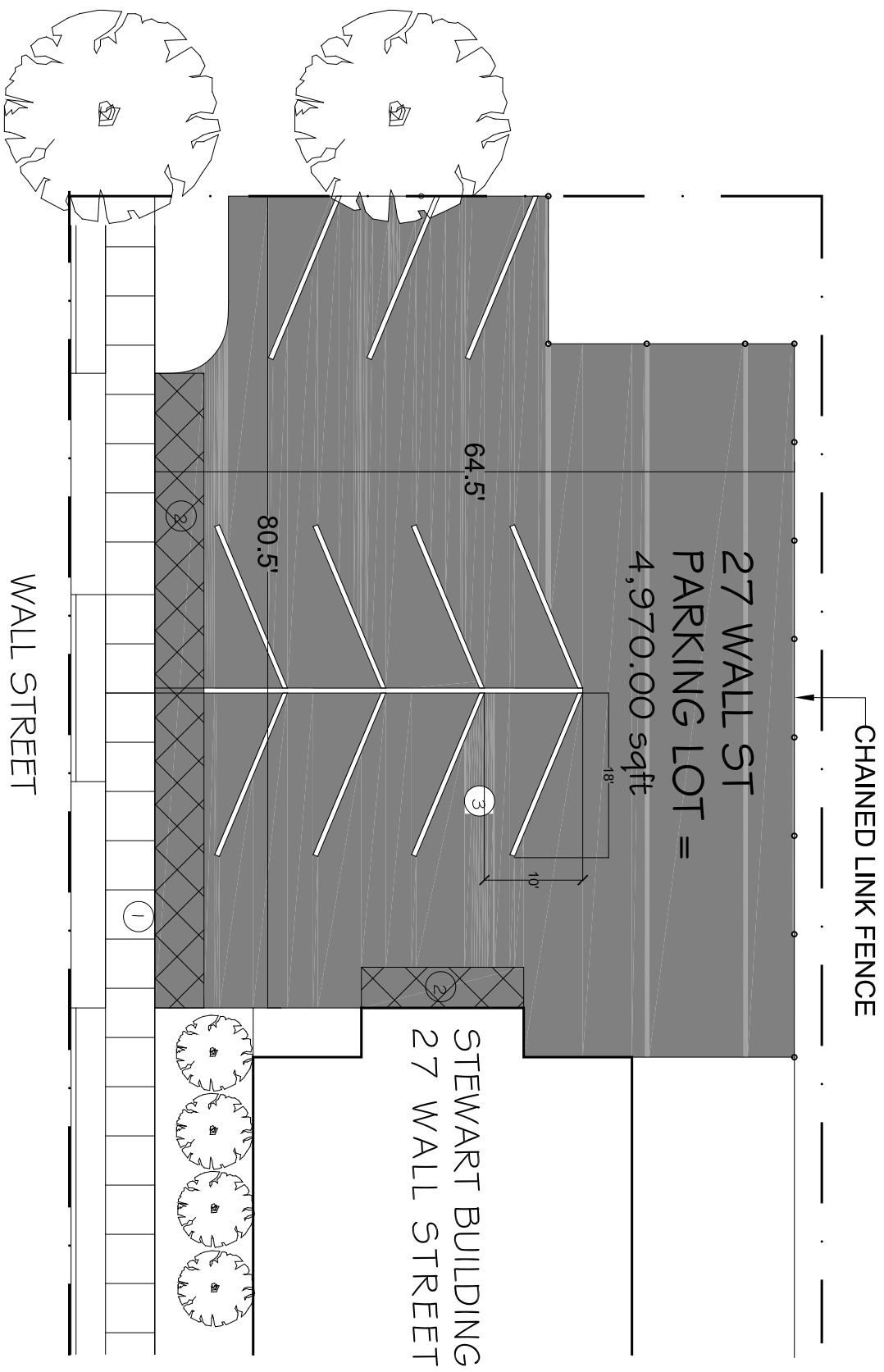
1. REMOVE CHAINED LINK FENCE AND DISPOSE OF OFF-SITE.
2. MEET EXISTING LINE & GRADE OF ADJOINING SURFACE.
3. INSTALL ASPHALT PARKING PAVEMENT PER DETAIL A-02
4. INSTALL ASPHALT OVERLAY PAVEMENT PER DETAIL A-01

SCALE:	1/64" = 1'
DATE:	APRIL 13, 2021, Rev. 1 (5/14/2021)
SHEET:	A - 00

ASPHALT PAVEMENT IMPROVEMENTS
 60 DIVISION STREET & 27 WALL ST.
 AMSTERDAM, NY 12010

AMSTERDAM HOUSING AUTHORITY
 52 DIVISION STREET, AMSTERDAM, NY 12010
 DAMARIS G. CARBONE, EXECUTIVE DIRECTOR

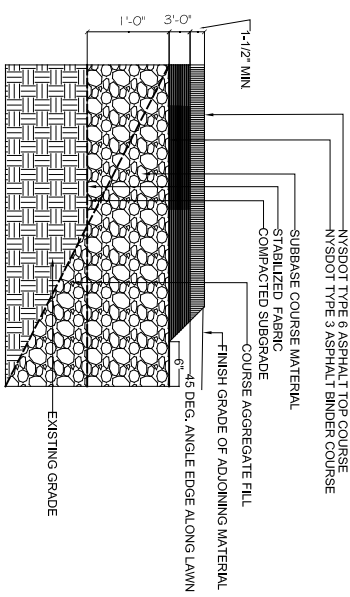
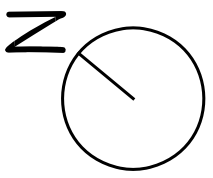
DRAWN BY:
 ERIKA V. RAMIREZ



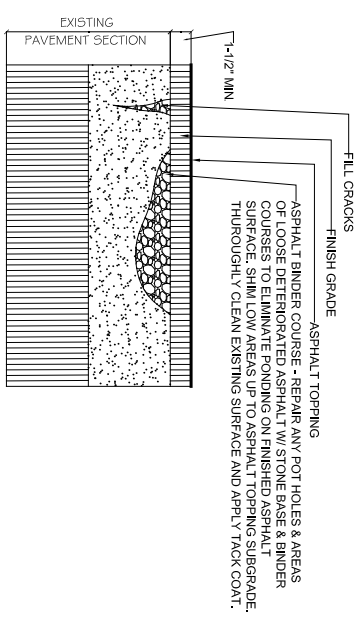
27 WALL STREET PARKING LOT

SCALE: 1/32" = 1'

1
A-03



1
A-05
ASPHALT PAVEMENT PARKING
NOT TO SCALE



1
A-04
ASPHALT OVERLAY
NOT TO SCALE

KEY NOTES for 27 WALL ST.

- 1. MEET EXISTING LINE & GRADE OF ADJOINING SURFACE.
 - 2. INSTALL ASPHALT PARKING PAVEMENT PER DETAIL A-05
 - 3. INSTALL ASPHALT OVERLAY PAVEMENT PER DETAIL A-04
 - 4. PAINT LINES ACCORDINGLY TO PARKING REGULATION
- SAW CUT ASPHALT IN NEAT STRAIGHT LINES. MILL & REMOVE EXISTING ASPHALT PAVEMENT, INCLUDING SUB-BASE MATERIAL, AND DISPOSE OF OFF-SITE.
- PREPARE ASPHALT FOR OVERLAY. INSTALL ASPHALT PAVEMENT ON

SCALE:	1/32" = 1'
DATE:	MAY 14, 2021
SHEET:	A - 01

ASPHALT PAVEMENT IMPROVEMENTS
60 DIVISION STREET & 27 WALL STREET
AMSTERDAM, NY 12010

AMSTERDAM HOUSING AUTHORITY
52 DIVISION STREET, AMSTERDAM, NY 12010
DAMARIS G. CARBONE, EXECUTIVE DIRECTOR

DRAWN BY:
ERIKA V. RAMIREZ